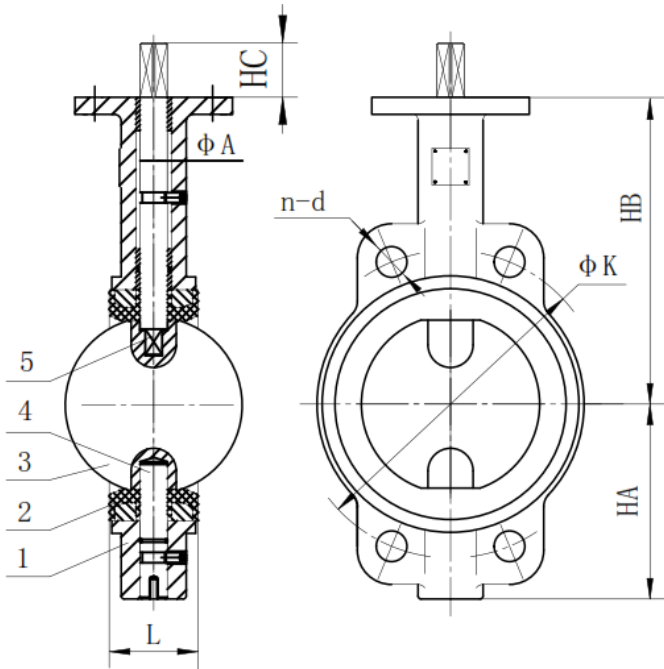
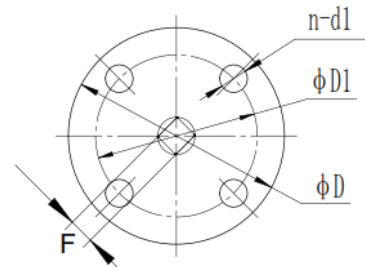


• **Modelo MW - Wafer DN40 a DN350 PN10 y PN16).**

- Comply with BS5155/EN593/MSS SP-67
- Top flange according to ISO5211
- Flanges dimensions conform to EN1092-2 PN10/PN16,
- Also available in class #150 wafer and compatible multinorm
- Disc: DI+Ni plated, SS304, SS316 and SS431
- Working Temperature
 - 10 °C to 120°C for EPDM seat
 - 10 °C to 85°C for NBR seat
 - 10 °C to 150°C for Viton seat



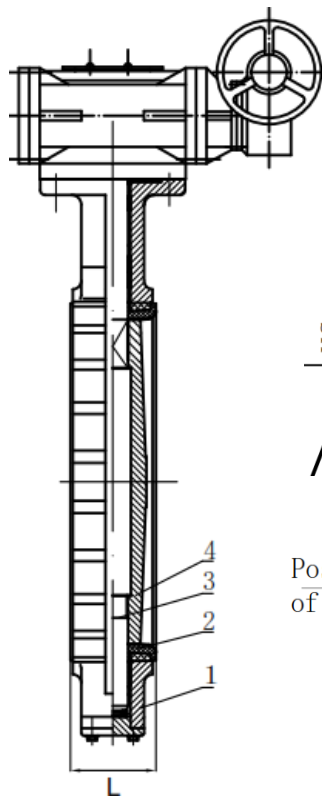
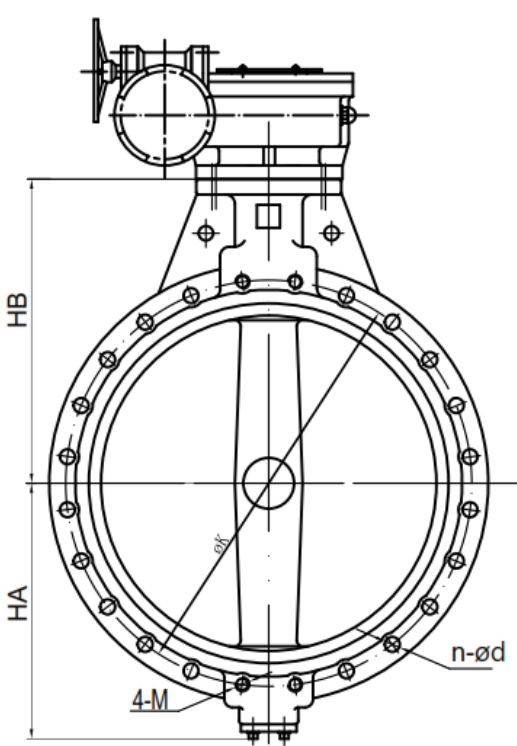
STANDARD MATERIALS OF MAIN PARTS		
ITEM	PART NAME	MATERIAL
1	Body	GGG-40
2	Seat	EPDM
3	Disc	DI/ SS
4	Lower stem	SS420
5	Upper stem	SS420



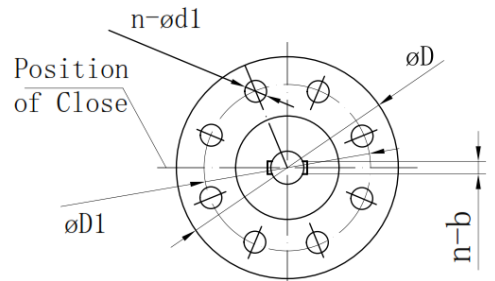
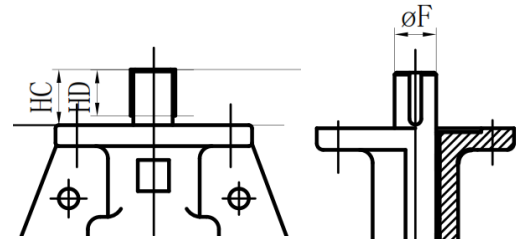
DIMENSIONS													
DN	HA	HB	L	ØA	PN10		PN16		ØD	ØD1	n-Ød1	HC	F
					Øk	n-Ød	Øk	n-Ød					
DN40	67	110	35	12.7	110	4-Ø18	110	4-Ø18	65	50	4-Ø7	32	11
DN50	69	147	45	12.7	125	4-Ø18	125	4-Ø18	65	50	4-Ø7	32	11
DN65	82	155	48	12.7	145	4-Ø18	145	4-Ø18	90	70	4-Ø9	32	11
DN80	98	163	49	12.7	160	4-Ø18	160	4-Ø18	90	70	4-Ø9	32	11
DN100	111	176	55	15.8	180	4-Ø18	180	4-Ø18	90	70	4-Ø9	32	11
DN125	123	205	58	19.05	210	4-Ø18	210	4-Ø18	90	70	4-Ø9	32	14
DN150	139	216	59	19.05	240	4-Ø23	240	4-Ø23	90	70	4-Ø9	32	14
DN200	172	253	64	22.2	295	4-Ø23	295	4-Ø23	125	102	4-Ø11	36	17
DN250	209	280	70	28.6	350	4-Ø23	355	4-Ø27	125	102	4-Ø11	36	22
DN300	241	332	80	31.8	400	4-Ø23	410	4-Ø27	125	102	4-Ø11	36	22
DN350	267	368	80	31.8	460	4-Ø23	470	4-Ø28	125	102	4-Ø13	36	24

• Modelo MW - Wafer DN400 a DN1200 PN10 y PN16

- Comply with BS5155/EN593/MSS SP-67
- Top flange according to ISO5211
- Flanges dimensions conform to EN1092-2 PN10/PN16,
- Also available in class #150 wafer and compatible multinorm
- Disc: DI+Ni plated, SS304, SS316 and SS431
- Working Temperature
 - 10 °C to 120°C for EPDM seat
 - 10 °C to 85°C for NBR seat
 - 10 °C to 150°C for Viton seat



STANDARD MATERIALS OF MAIN PARTS		
ITEM	PART NAME	MATERIAL
1	Body	GGG-40
2	Seat	EPDM
3	Disc	DI/ SS
4	stem	SS420



Key's Place is the position of close.

DIMENSIONS																	
DN	HA	HB	L	PN10			PN16			øD	øD1	n-ød1	n-b		HC	HD	øF
				øk	n-ød	4-M	øk	n-ød	4-M				PN10	PN16			
DN400	298	400	90	515	4-ø28		525	4-ø31		210	165	4-22	1-10		45	52	33.15
DN450	318	422	109	565	4-ø28		585	4-ø31		210	165	4-22	1-10		45	52	38
DN500	349	480	135	620	4-ø28		650	4-ø34		210	165	4-22	1-12		55	64	41.15
DN600	410	562	156	725	20-ø31		770	20-ø37		210	165	4-22	1-16	2-16	65	70	50.65
DN700	527	629	169	840	20-ø31	4-M27	840	20-ø37	4-M33	300	254	8-18	2-18		85	95	63.35
DN800	601	666	195	950	20-ø34	4-M30	950	20-ø41	4-M36	300	254	8-18	2-18		85	95	63.35
DN900	653	722	211	1050	24-ø34	4-M30	1050	24-ø41	4-M36	300	254	8-18	2-20		130	130	75
DN1000	718	800	229	1160	24-ø37	4-M33	1170	24-ø44	4-M39	300	254	8-18	2-22		130	130	85
DN1200	864	941	286	1380	28-ø41	4-M36	1390	28-ø50	4-M45	350	298	8-22	2-28		150	150	105