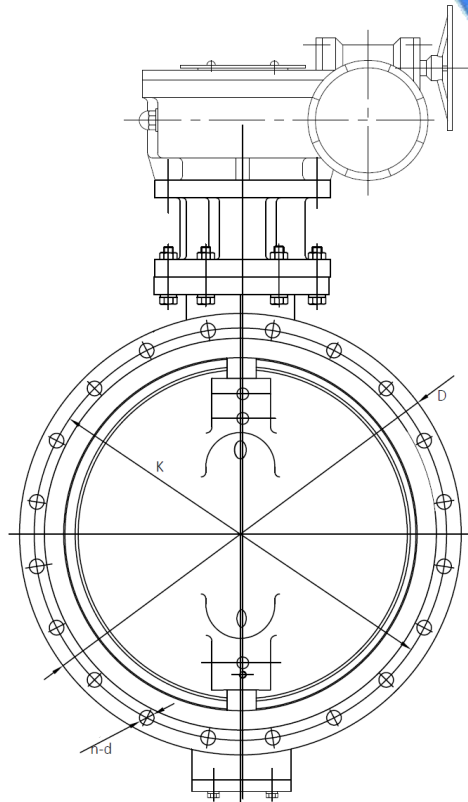
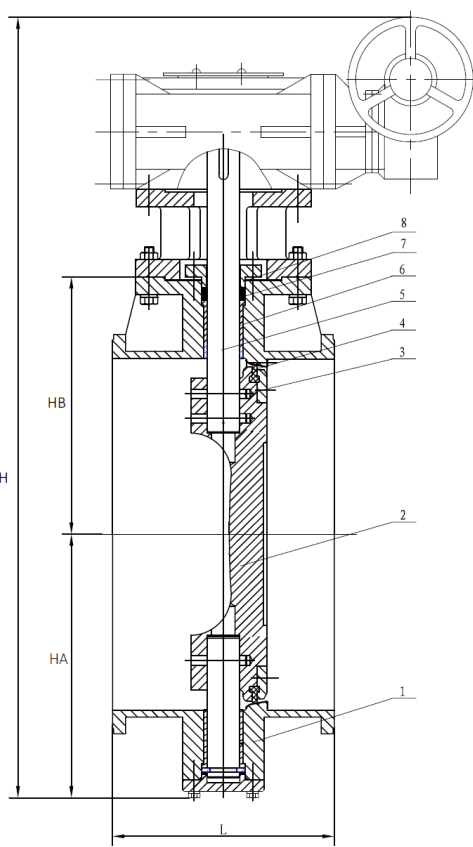
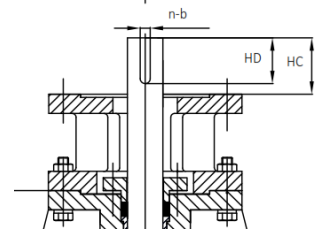
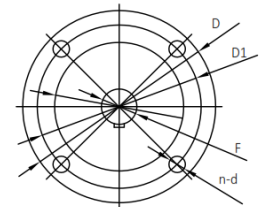


• Modelo MX Double flanged Excentrical DN100 a DN600 PN10 , PN16 y PN25

- Face to Face dimensions according to EN558-1 Series 13/ Series 14
- Comply with BS5155/EN593/MSS SP-67
- Top flange according to ISO5211
- Flanges dimensions conform to EN1092-2 PN10/PN16/PN25,
- Also available in class #150
- Pressure Test according to API598
- Working Temperature
 - 10 °C to 120°C for EPDM seat



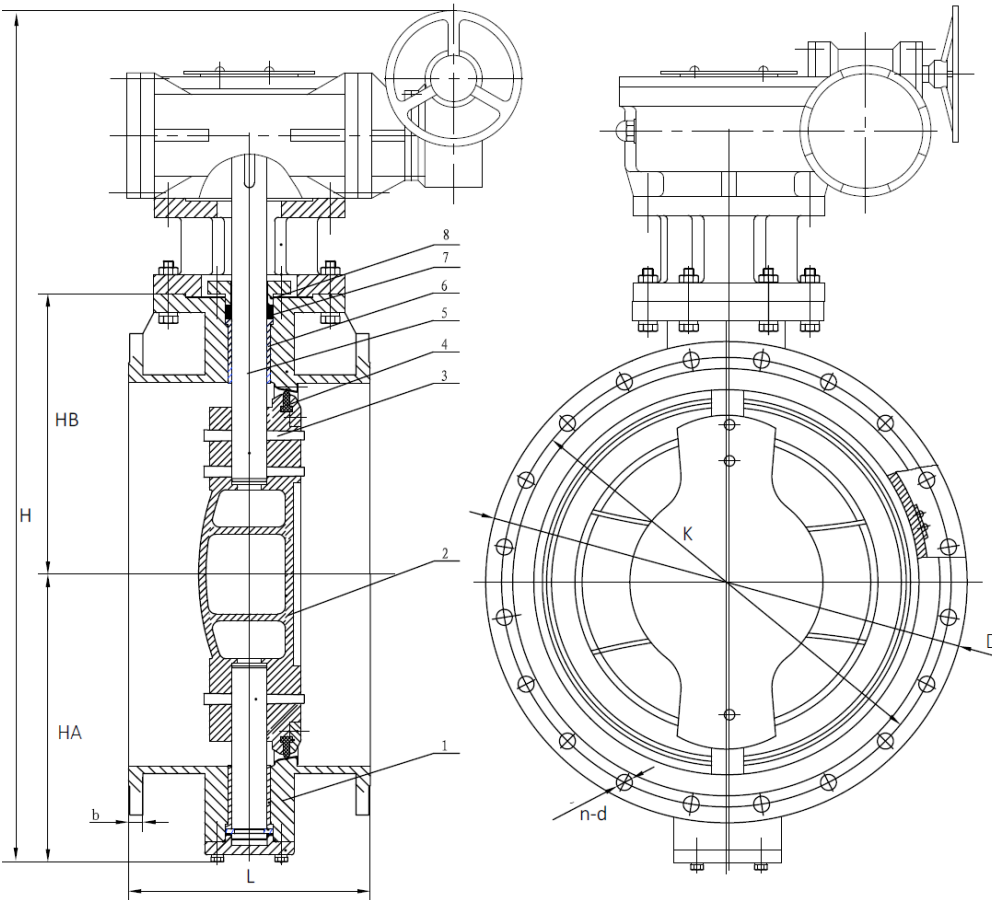
STANDARD MATERIALS OF MAIN PARTS		
ITEM	PART NAME	MATERIAL
1	Body	GGG-40
2	Disc	DI/SS
3	PIN	SS416
4	Seat	SS316
5	Shaft	SS410
6	Bushing	Bronze
7	O ring	NBR
8	Gland	DI



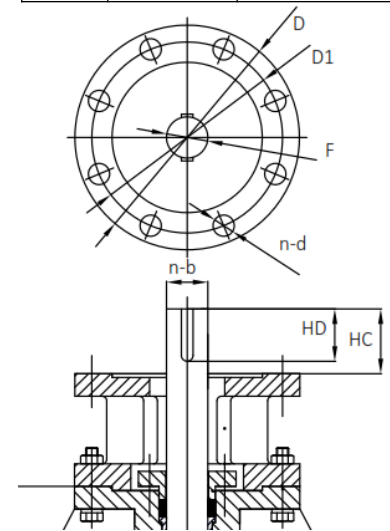
DIMENSIONS																					
DN	HA	HB	L	PN10			PN16			PN25			øD	øD1	n-ød1	n-b		HC	HD	øF	h
				D	øk	n-ød	D	øk	n-ød	D	øk	n-ød				PN10	PN16				
DN100	120	140	190	220	180	8-ø18	220	180	8-ø18	235	190	8-ø23	90	70	4-ø10	1-ø5	35	25	16	3	
DN150	153	170	210	285	240	8-ø23	285	240	8-ø23	300	250	8-ø27	125	102	4-ø12	1-ø6	35	25	20		
DN200	210	208	230	340	295	8-ø23	340	295	12-ø23	360	310	12-ø27	125	102	4-ø12	1-ø8	50	45	25		
DN250	214	240	250	395	350	12-ø23	405	355	12-ø27	425	370	12-ø30	175	140	4-ø18	1-ø8	55	45	30		
DN300	262	278	270	445	400	12-ø23	460	410	12-ø27	485	430	16-ø30	210	165	4-ø22	1-ø10	60	56	34	5	
DN350	307	307	290	505	460	16-ø23	520	470	16-ø27	555	490	16-ø33	210	165	4-ø22	1-ø12	60	56	40	5	
DN400	343	343	310	565	515	16-ø28	580	525	16-ø30	620	550	16-ø36	210	165	4-ø22	1-ø14	60	56	45	5	
DN500	420	415	350	670	620	20-ø28	715	650	20-ø33	730	660	20-ø36	210	165	4-ø22	1-ø16	85	80	52	5	
DN600	440	440	390	895	840	24-ø31	840	770	20-ø36	845	770	20-ø39	300	254	8-ø18	2-ø16	87	85	55	5	

• Modelo MX Double flanged Excentrical DN700 a DN1200 PN10 , PN16 y PN25

- Face to Face dimensions according to EN558-1 Series 13/ Series 14
- Comply with BS5155/EN593/MSS SP-67
- Top flange according to ISO5211
- Flanges dimensions conform to EN1092-2 PN10/PN16/PN25,
- Also available in class #150
- Pressure Test according to API598
- Working Temperature
 - 10 °C to 120°C for EPDM seat



STANDARD MATERIALS OF MAIN PARTS		
ITEM	PART NAME	MATERIAL
1	Body	GGG-40
2	Disc	DI/SS
3	PIN	SS416
4	Seat	SS316
5	Shaft	SS410
6	Bushing	Bronze
7	O ring	NBR
8	Gland	DI



DIMENSIONS																					
DN	HA	HB	L	PN10			PN16			PN25			øD	øD1	n-ød1	n-b		HC	HD	øF	h
				D	øk	n-ød	D	øk	n-ød	D	øk	n-ød				PN10	PN16				
DN700	518	510	430	895	840	24-ø31	910	840	24-ø36	960	875	24-ø42	300	254	8-ø18	2-ø18	103	100	65	5	
DN800	573	570	470	1015	950	24-ø34	1025	950	24-ø39	1085	990	24-ø48	300	254	8-ø18	2-ø20	125	110	70	5	
DN900	629	628	510	1115	1050	28-ø34	1125	1050	28-ø39	1185	1090	28-ø48	300	254	8-ø18	2-ø22	155	140	80	5	
DN1000	713	708	550	1230	1160	28-ø37	1255	1170	28-ø42	1320	1210	28-ø56	350	298	8-ø22	2-ø25	170	160	92	5	
DN1200	820	817	630	1455	1380	32-ø41	1485	1390	32-ø48	1530	1420	32-ø62	350	298	8-ø22	2-ø28	170	160	100	5	