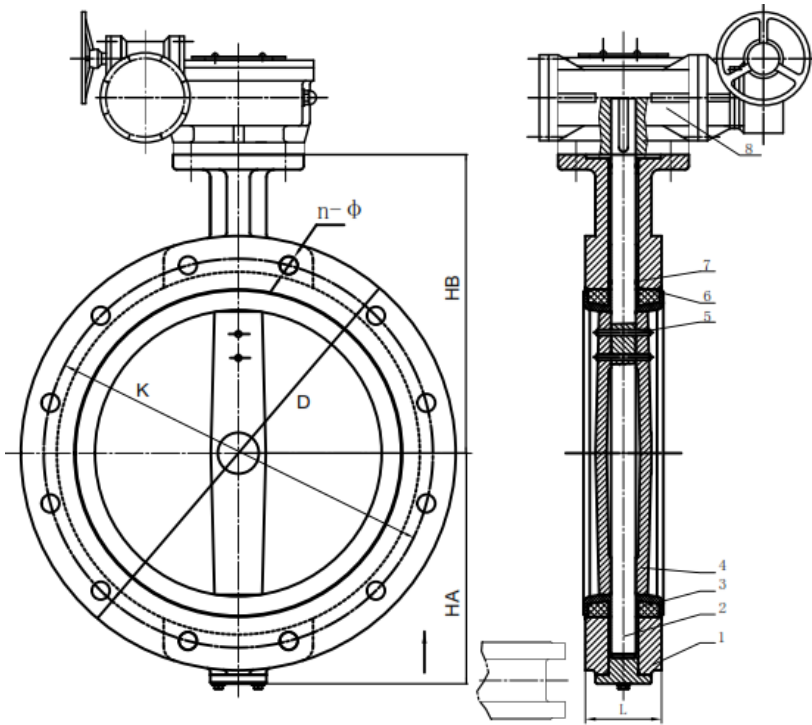
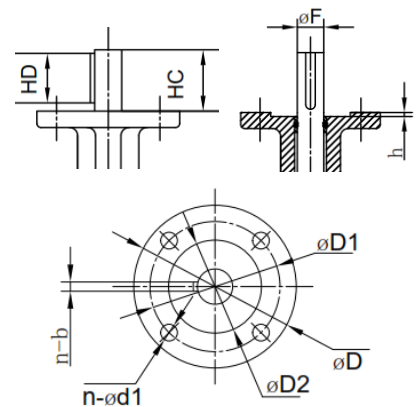


• **Modelo MS - Flanged U serie 20 DN40 a DN600 PN10 / PN16 / PN25**

- DIN EN558 serie 20 corta /DIN EN 558 series 20 short / DIN EN558 Reihe 20
- Comply with BS5155/EN593/MSS SP-67
- Top flange according to ISO5211
- Flanges dimensions conform to EN1092-2 PN10/PN16/ PN25,
- Also available in class #150
- Disc: DI+Ni plated, SS304, SS316 and SS431
- Working Temperature
 - 10 °C to 120°C for EPDM seat
 - 10 °C to 85°C for NBR seat
 - 10 °C to 150°C for Viton seat



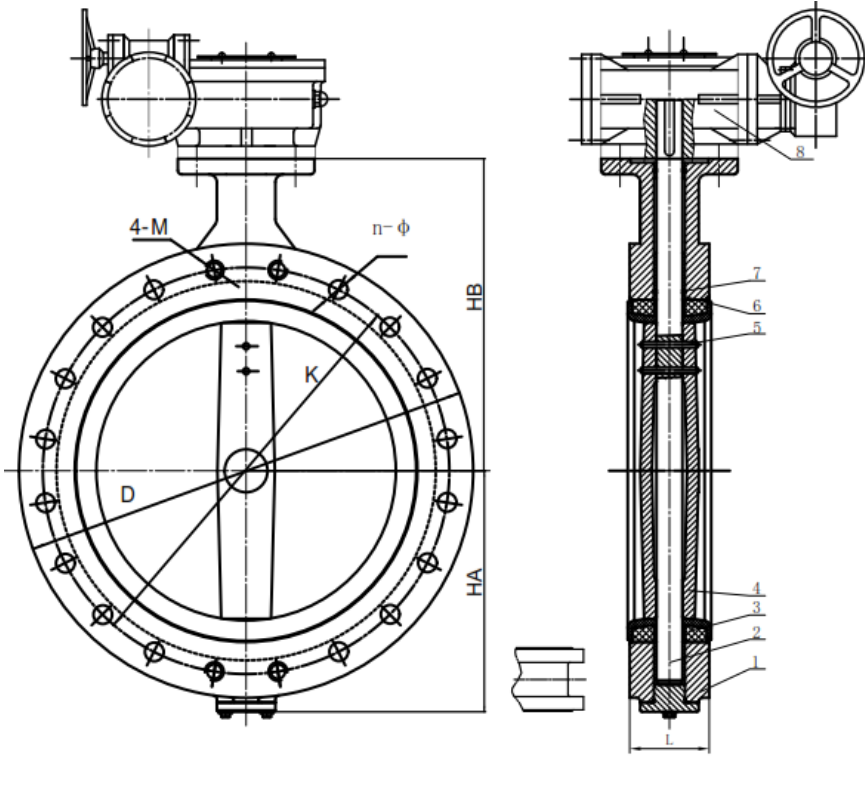
STANDARD MATERIALS OF MAIN PARTS		
ITEM	PART NAME	MATERIAL
1	Body	GGG-40
2	Shaft	SS420
3	Seat	EPDM
4	Disc	DI +Ni or SS
5	Taper Pin	SS416
6	Bushing	Bronze
7	O ring	NBR
8	Gear Box	CI



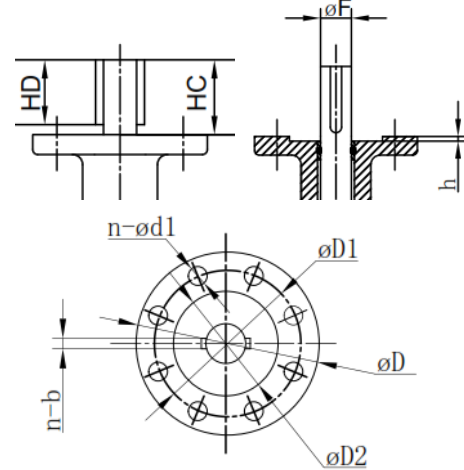
DN	HA	HB	L	DIMENSIONS															
				PN10			PN16			φD	φD1	φD2	n-φd1	n-b		HC	HD	φF	h
				D	φk	n-φd	D	φk	n-φd					PN10	PN16				
DN50	76	162	43	165	125	4-φ18	165	125	4-φ18	65	50	35	4-8	1-φ3	32	15.7	12.6	3	
DN65	89	175	46	185	145	4-φ18	185	145	4-φ18	65	50	35	4-8	1-φ3	32	15.7	12.6	3	
DN80	95	181	46	200	160	4-φ18	200	160	8-φ18	65	50	35	4-8	1-φ3	32	15.7	12.6	3	
DN100	114	200	52	220	180	8-φ18	220	180	8-φ18	90	70	55	4-10	1-φ5	32	18.6	15.77	3	
DN125	127	213	56	250	210	8-φ18	250	210	8-φ18	90	70	55	4-10	1-φ5	32	18.6	18.92	3	
DN150	140	225	56	285	240	8-φ23	285	240	8-φ23	90	70	55	4-10	1-φ5	32	18.6	18.92	3	
DN200	177	260	60	340	295	8-φ23	340	295	12-φ23	125	102	70	4-12	1-φ5	45	18.6	22.1	3	
DN250	203	292	68	395	350	12-φ23	405	355	12-φ27	125	102	70	4-12	1-φ5	45	27.4	28.5	3	
DN300	242	337	78	445	400	12-φ23	460	410	12-φ27	125	102	70	4-12	1-φ8	45	27.4	31.7	3	
DN350	267	368	78	505	460	16-φ23	520	470	16-φ27	125	102	70	4-12	1-φ8	45	27.4	31.7	3	
DN400	309	400	86	565	515	16-φ27	580	525	16-φ30	175	140	100	4-18	1-φ10	52	45	33.15	4	
DN450	337	422	114	615	565	20-φ27	640	585	20-φ30	175	140	100	4-18	1-φ10	52	45	38	4	
DN500	361	480	127	670	620	20-φ27	715	650	20-φ33	175	140	100	4-18	1-φ12	64	55	41.15	4	
DN600	459	562	154	780	725	20-φ30	840	770	24-φ36	210	165	130	4-22	1-φ16 2-φ16	70	65	50.65	5	

• Modelo MS - Flanged U serie 20 DN700 a DN1200 PN10 y PN16

- DIN EN558 serie 20 corta / DIN EN 558 series 20 short / DIN EN558 Reihe 20
- Comply with BS5155/EN593/MSS SP-67
- Top flange according to ISO5211
- Flanges dimensions conform to EN1092-2 PN10/PN16,
- Also available in class #150
- Disc: DI+Ni plated, SS304, SS316 and SS431
- Working Temperature
 - 10 °C to 120°C for EPDM seat
 - 10 °C to 85°C for NBR seat
 - 10 °C to 150°C for Viton seat



STANDARD MATERIALS OF MAIN PARTS		
ITEM	PART NAME	MATERIAL
1	Body	GGG-40
2	Shaft	SS420
3	Seat	EPDM
4	Disc	DI +Ni or SS
5	Taper Pin	SS416
6	Bushing	Bronze
7	O ring	NBR
8	Gear Box	CI



DIMENSIONS																				
DN	HA	HB	L	PN10				PN16				øD	øD1	øD2	n-ød1	n-b PN10/16	HC	HD	øF	h
				D	øk	n-ød	4-M	D	øk	n-ød	4-M									
DN700	520	624	165	895	840	20-ø30	4-M27	910	840	20-ø36	4-M33	300	254	200	8-ø18	2-ø18	95	85	63.35	5
DN800	591	672	190	1015	950	20-ø33	4-M30	1025	950	20-ø39	4-M36	300	254	200	8-ø18	2-ø18	95	85	63.35	5
DN900	656	720	203	1115	1050	24-ø33	4-M30	1125	1050	24-ø39	4-M36	300	254	200	8-ø18	2-ø20	150	130	75	5
DN1000	721	800	218	1230	1160	24-ø36	4-M33	1255	1170	24-ø42	4-M39	300	254	200	8-ø18	2-ø22	150	130	85	5
DN1200	864	960	276	1455	1380	28-ø39	4-M36	1485	1390	28-ø48	4-M45	350	298	230	8-ø22	2-ø28	150	150	105	5
DN1400	925	1000	279	1675	1590	32-ø42	4-M39	1685	1590	32-ø48	4-M45	350	298	230	8-ø22	2-ø28	150	150	105	5